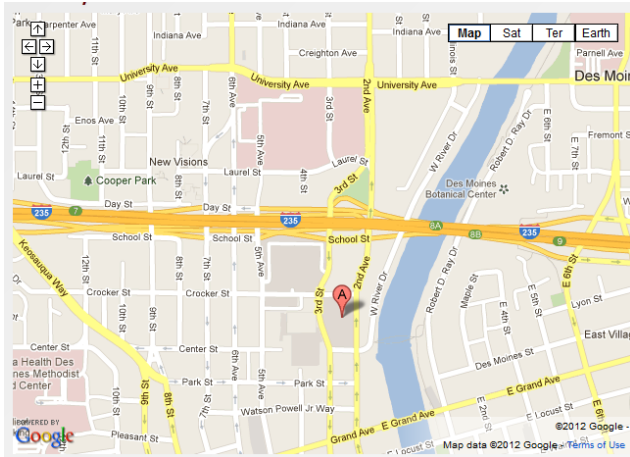




## AIA Iowa Convention

Iowa Events Center  
833 5<sup>th</sup> Avenue, Des Moines, IA

### Driving Directions



From Interstate 35 from the North:

Follow I-235 West into Downtown and take the Third Street Exit to the Iowa Events Center.

From Interstate 35 from the South:

Merge onto I-235 East exit and travel east towards Downtown. Take the downtown exit and proceed to the Third Street exit.

From Interstate 80 from the East:

Headed west on I-80, take the I-235 West exit and continue towards Downtown. Take the 3rd Street exit and go south to the Iowa Events Center complex. Parking is available on-site, with additional street and ramp parking within walking distance.

From Interstate 80 from the West:

Headed east on I-80, take the I-235 East exit and continue towards Downtown. Take the Iowa Events Center Exit (Third Street) and turn right.

### Parking Information <https://www.iowaeventscenter.com/plan-your-visit/directions-parking>

Parking is available north of the Iowa Events Center with entrances off the following streets: 3<sup>rd</sup> Street, 5<sup>th</sup> Avenue, and Crocker Street. The Iowa Events Center surface parking lots offer the closest and most convenient access to the facility, and easy access to I-235 and other major routes after the event. ADA Accessible parking is available at the Iowa Events Center by entering the lot south of Crocker Street, next to Community Choice Convention Center.

#### Parking and Skywalk Downtown:

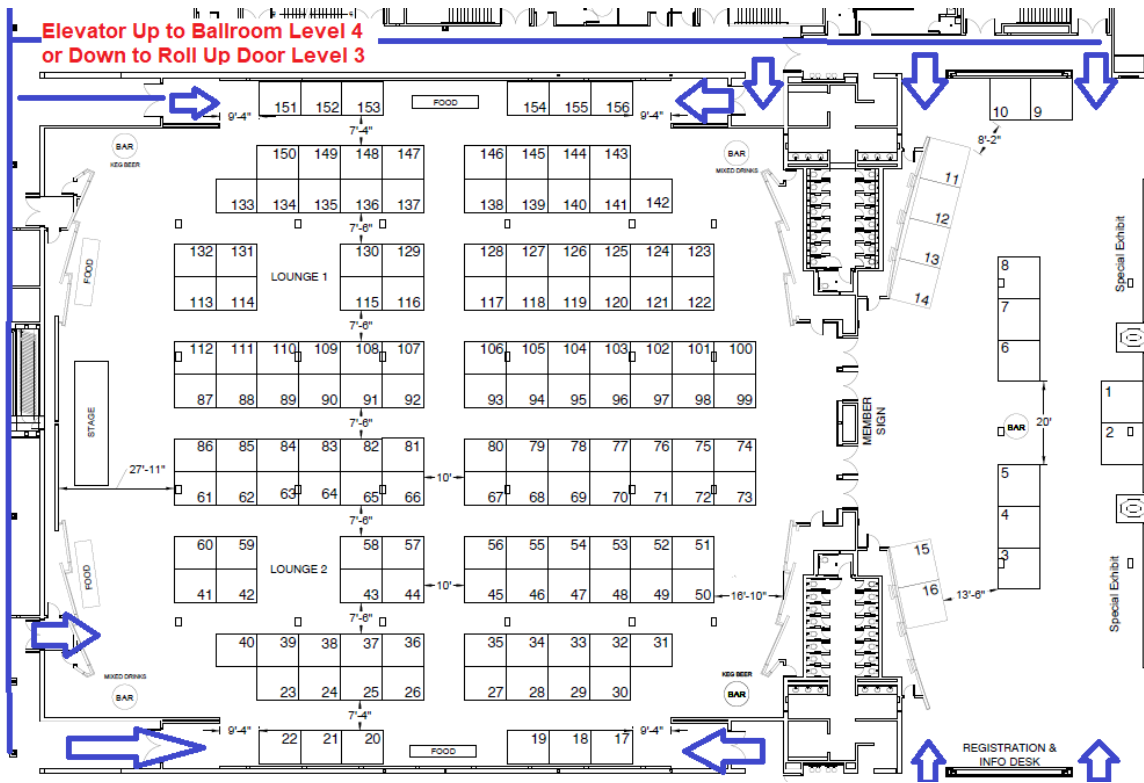
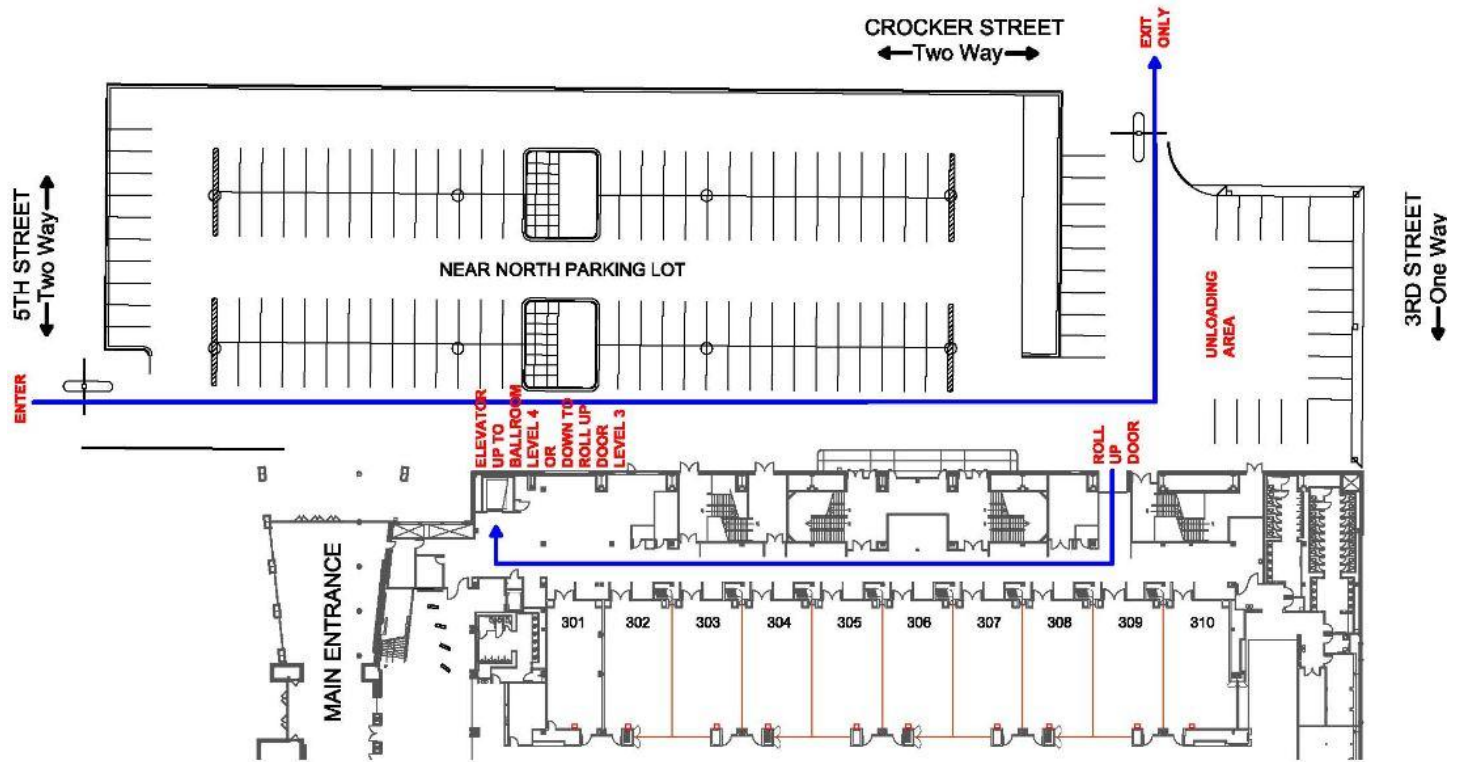
Street parking is available throughout downtown with the convenience of the ParkDSM mobile parking app. Pay attention to the location and rates as many spots have different time limits and parking restrictions during certain times. Click [here](#) for more information about ParkDSM, powered by ParkMobile.

City parking garages are located throughout downtown with convenient skywalk access to the Iowa Events Center. Payment for city garages is collected each time you enter the garage. The City of Des Moines completed a downtown parking signage system to give up to the minute details on where parking is available in the garages.

### Exhibit Unloading / Loading Instructions

1. Enter through roll up door on the northeast side of the Community Choice Convention Center
2. Take right down back service hallway to service elevator
3. Take elevator to floor 4 "Ballroom Level"
4. Take left upon exiting elevator
5. Look for two oak double doors
6. Enter through doors and you will be located in the far NW corner of the ballroom level/exhibit area.

# Exhibit Unloading / Loading Map



Questions? Please call the Iowa Events Center Main office at 515.564.8000.